

# FOR LEASE

## Detroit and Gladys Lakewood, Ohio

Up to 2,500 sf available



**Description:** 15100 - 15112 Detroit. The Plaza sits on the NW corner of Detroit and Gladys, across from Starbucks. The plaza is roughly 7,300 sq ft on the retail floor with apartments above.

**Co-Tenants:** Inline with The Exchange, Roots Café, Lion and Blue, etc.

**Nearby Tenants:** Marc's, Pet Supplies Plus, Discount Drug Mart, Dollar General, Verizon, T-mobile, Chipotle, Dave's Hot Chicken, Potbelly, Charley's, Beyond Juicery, etc.

### Demographics:

#### Population:

1 mile: 25,746

3 miles: 113,510

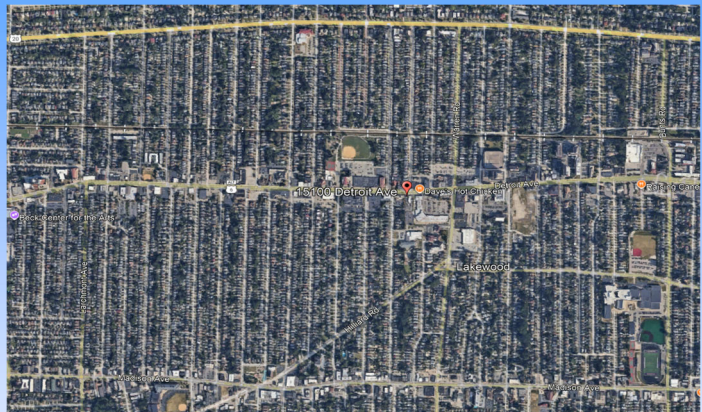
5 miles: 214,468

#### Average Household Income:

1 mile: \$91,069

3 miles: \$77,735

5 miles: \$75,603



For more information contact:  
**Craig Cohen**  
[Craig@CohenCommercialGroup.com](mailto:Craig@CohenCommercialGroup.com)



**Cohen Commercial Group**  
3690 Orange Place, Suite 111  
Beachwood, Ohio 44122  
(216) 223-5060

The information submitted herein is not guaranteed. Although obtained from reliable sources, it is subject to errors, omissions, prior sale/lease and withdrawal from the market without notice. Cohen Commercial Group, its affiliates, agents, and employees, and Seller/Landlord make no representations about the accuracy of said information and recommend individual investigation to certify its validity.